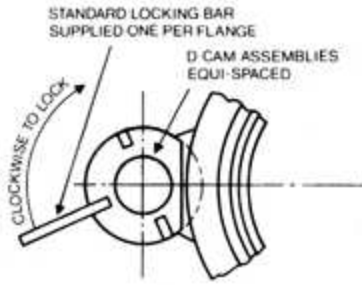
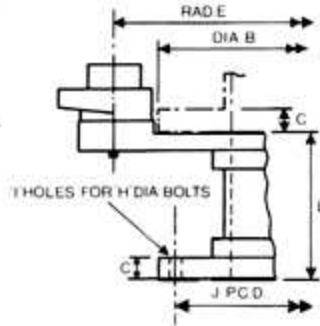


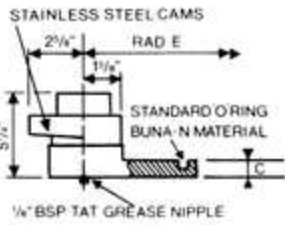
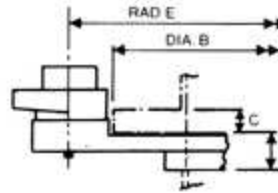
# FITMENT TYPES, WEIGHTS AND DIMENSIONS



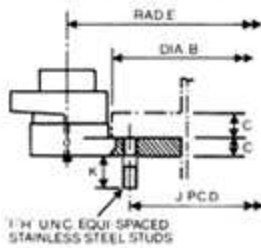
**Short Spool Flange**



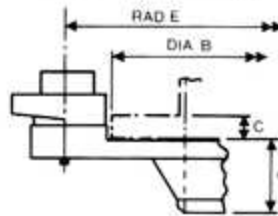
**Slip-on Flange**



**Studded Flange**



**Weld Neck Flange**



## Standard Types & Sizes of 150 A.S.A. Couplings

A	NOMINAL FLANGE SIZE											
	2"	3"	4"	6"	8"	10"	12"	14"	16"	20"	22"	24"
B	6"	7.5"	9"	11"	13.5"	16"	19"	21"	23.5"	27.5"	29.5"	32"
C	0.75"	0.937"	0.937"	1"	1.125"	1.187"	1.25"	1.375"	1.437"	1.687"	1.75"	1.875"
D	2	2	2	2*	3	3	4	4	5	6	7	8
E	4.718"	5.468"	6.187"	7.218"	8.437"	9.687"	11.187"	12.187"	13.437"	15.5"	16.5"	17.75"
F	1"	1.187"	1.317"	1.562"	1.75"	1.937"	2.187"	2.25"	2.5"	2.875"	3.125"	3.25"
G	2.5"	2.75"	3"	3.5"	4"	4"	4.5"	5"	5"	5.687"		6"
H	0.625"	0.625"	0.625"	0.75"	0.75"	0.875"	0.875"	1"	1"	1.125"	1.25"	1.25"
I	4	4	8	8	8	12	12	12	16	20	20	20
J	4.75"	6"	7.5"	9.5"	11.75"	14.25"	17"	18.75"	21.25"	25"	27.25"	29.5"
K	1.125"	1.875"	1.875"	2.25"	2.25"	2.5"	2.5"	2.5"	2.875"	3.125"	3.375"	3.625"
L				5"	5.75"	6"	6.625"	7.25"	7.5"	8.5"		10"

## Weights (kgs)

\*Available with 3 cams.

Studded	14.1	15.45	17.27	19.54	30	35.9	46.36	55.9	67.73	102.7	118.2	134.5
Weld Neck	15.45	17.27	19.54	23.18	36.36	42.73	61.82	74.54	94.1	120	145.4	167.3
Slip On	15	16.82	18.63	20.91	32.27	38.63	54.45	60	72.72	110.4	127.2	144.5
Short Spool				33.81	51.36	67.72	96.36	109.5	137.7	216.3	250.4	285.9