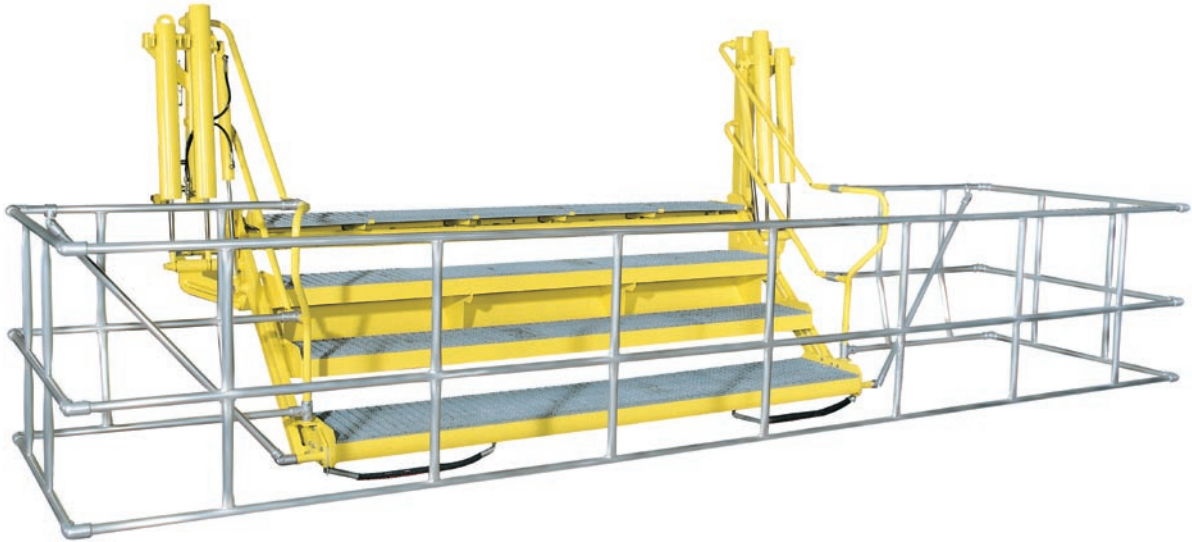


E0264 - 3000 | FOLDING STAIRWAY



FEATURES

- * Carbon steel hot galvanized
- * Balanced by spring cylinder (pressure springs)
- * Handrails
- * First step with safety guidance shield
- * Hot galvanized, anti-skid steps
- * Contact bracket, covered with an oil-resistant rubber bumper
- * Guide arms
- * Maintenance-free bearing
- * Supporting frame
- * Arresting device
- * Immediately after mounting, the folding stairway will be operational

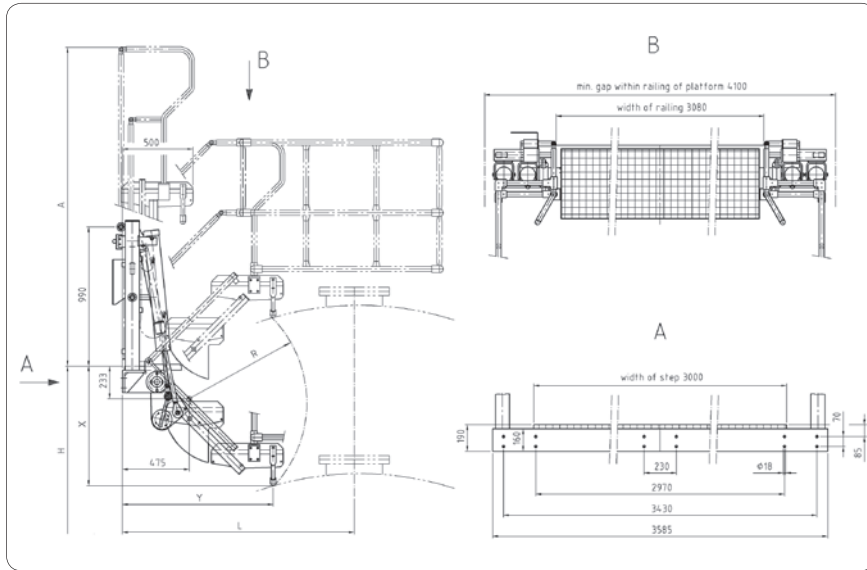
SAFETY

Folding stairways are normally used to bridge the distance from loading racks to tank cars or rail tankers. They however can also be used for similar applications. Folding stairways have to fulfil high safety requirements.

The extra large EMCO folding stairway E0264 - 3000 fulfils the highest safety requirements. Design is made up for safe and unrestricted access to the top of the road and rail tankers within the full width.

E0264 - 3000

E0264 - 3000 | FOLDING STAIRWAY

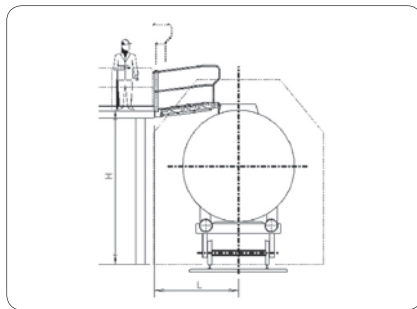


ACCESSORIES

- * Limit switch for indication of parking position
- * Warning panel red/white
- * Pneumatic or hydraulic operation
- * Safety basket (with third rail) integrated with folding stairway

DIMENSIONS AND TECHNICAL DATA

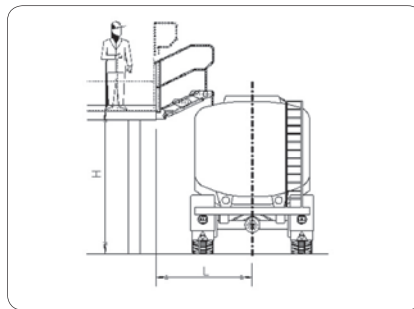
	A	R	X	Y	Safety basket	Bending moment on platform	Vertical supporting force (at max. load)	Weight
3 steps	1845	864	850	1073	without	9500 Nm	10800 N	480 kg
3 steps	1845	864	850	1073	with	10000 Nm	11300 N	530 kg
4 steps	2265	1279	1143	1366	without	12900 Nm	13500 N	550 kg
4 steps	2265	1279	1143	1366	with	13500 Nm	14000 N	600 kg
5 steps	2685	1699	1440	1663	without	14800 Nm	16000 N	600 kg
5 steps	2685	1699	1440	1663	with	15600 Nm	16500 N	650 kg



RAIL CAR LOADING

	L	H
3 steps	2200*	3400
4 steps	2600	to 4200

*For low racks, clearance gauge to be considered



TANK TRUCK LOADING

	L	H
3 steps	1650*	2800
4 steps	2150	to 3400

*Recommendation: provision of a kerb

EMCOWHEATON

A Gardner Denver Product

Better by Design



EMCO WHEATON GmbH
Emcostraße 2-4 · 35274 Kirchhain · Germany
Phone +49 6422 84-0 · Fax +49 6422 5100
www.emcowheaton.com · info-de@emcowheaton.com

Whilst the content of this leaflet has been edited with the greatest care, we are not liable for any errors and/or omissions. Subject to change without notice.

E0264 - 3000 EN 05/08