

PROTECTIVE SYSTEM I WITH GRATINGS AND BACK RESTS

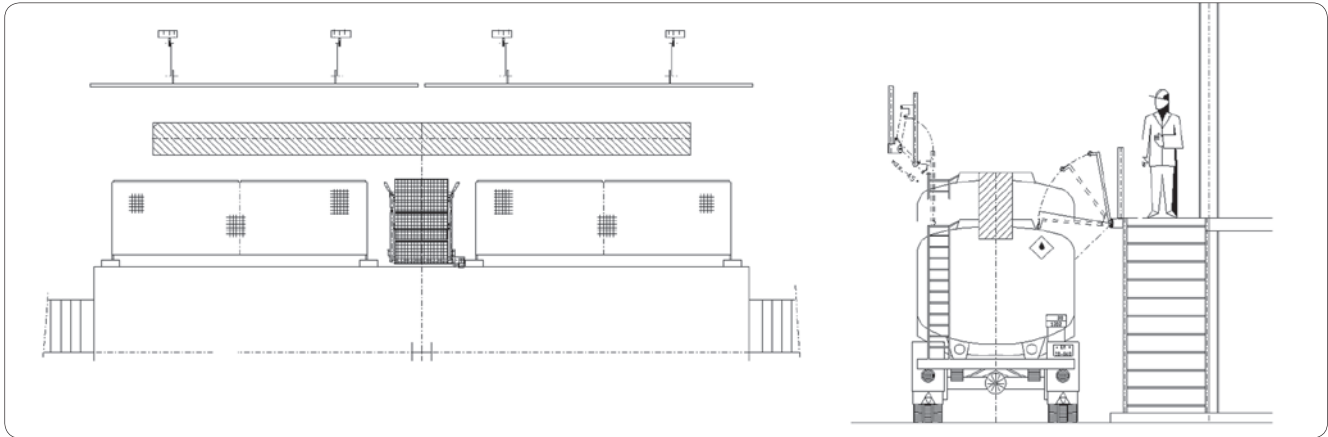


The EMCO WHEATON protective system consists of gratings, back rests and folding stairway. The system is an important safety feature when entering the top of tank trucks. The system is designed to keep the operator safe while working on top of tankers. By using the pneumatic or hydraulic control gratings, stairways and back rests move down automatically to the tankers top. In this position the system is efficiently preventing the operator from falling between safety rail and tank top. The system can optionally be equipped with an automatic switch off. It stops before grating and back rest reaches the tanks top. The advantage is that the elements are not laying on the tanker.

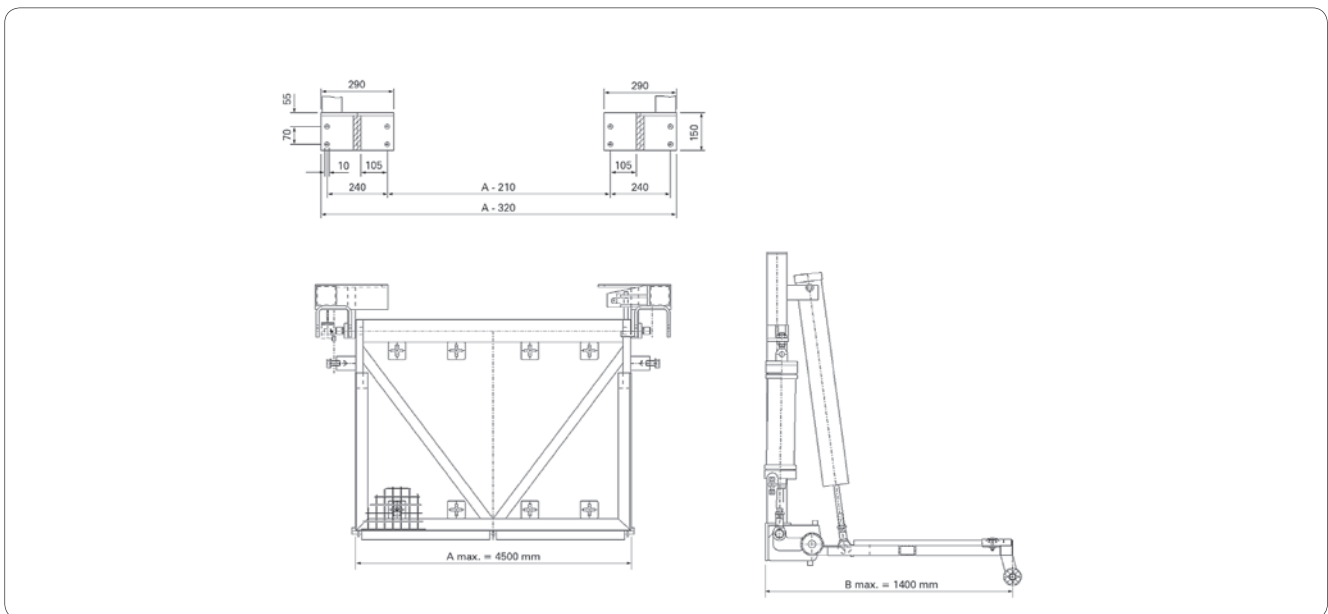
PROTECTIVE SYSTEM

PROTECTIVE SYSTEM I WITH GRATINGS AND BACK RESTS

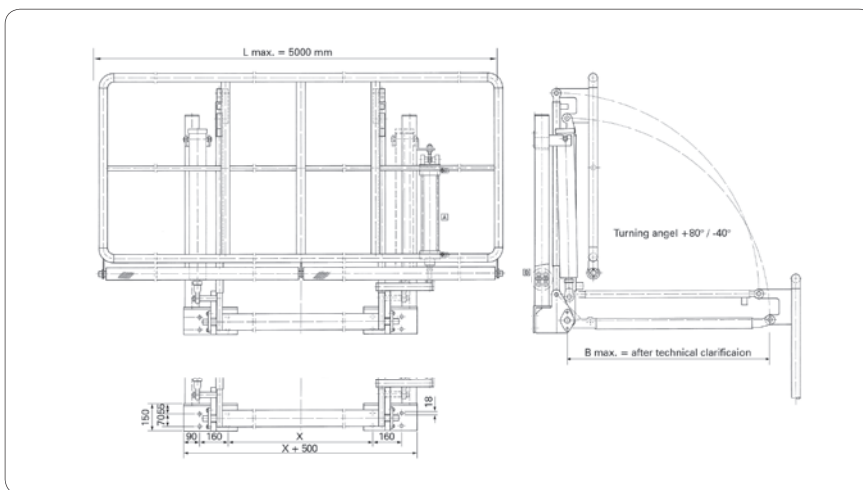
EXAMPLE OF APPLICATION



E0662 PROTECTIVE GRATING



E0574 BACK REST



The exact arrangement of Fall Prevention Gratings designed according to customers requirements by use of the elements shown below. Information about EMCO WHEATON folding stairways see our data sheet E0264.

Design in carbon steel with primer or carbon steel hot galvanized.

EMCO WHEATON

A Gardner Denver Product

Better by Design



EMCO WHEATON GmbH
Emcostraße 2-4 · 35274 Kirchhain · Germany
Phone +49 6422 84-0 · Fax +49 6422 5100
www.emcowheaton.com · info-de@emcowheaton.com

Whilst the content of this leaflet has been edited with the greatest care, we are not liable for any errors and/or omissions. Subject to change without notice.
Protective system EN 05/08