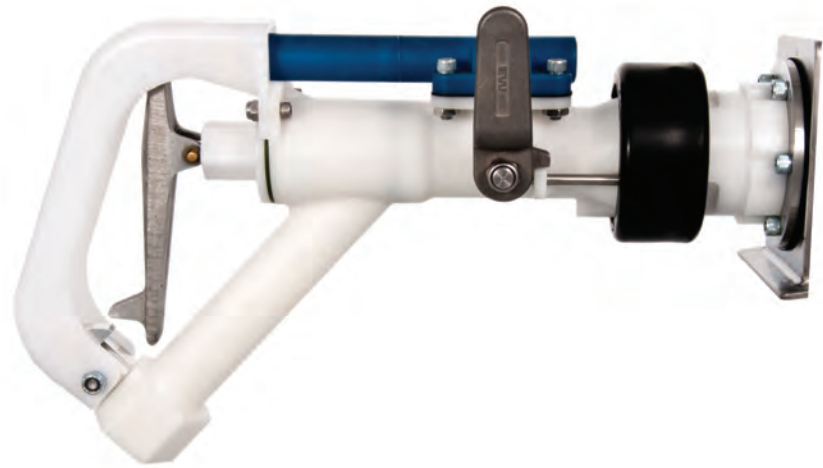


OPERATION

To begin fueling, the operator connects the nozzle to the adapter and the fill lever is activated. The fluid flow creates low pressure in the trip rod assembly. The low pressure created causes air in the tank to travel upwards to the sensing tube and into the trip rod assembly. Once the fluid level reached the sensing tube outlet, air can no longer travel from the tank, creating a vacuum in the trip rod assembly. This vacuum is used to actuate a diaphragm in the trip rod assembly, automatically shutting off the fueling process.

- System requires a flow rate of 5 to 10 gallons per minute.



ACCESSORIES

Dust Cap for Adapter

Part No: 801257
Material: Aluminum

Dust Cap Seal for Adapter

Part No: 801258
Material: Viton

Dust Cap O-Ring for Adapter

Part No: 801259
Material: Viton

Parking Adapter for Nozzle

Part No: 801263
Material: Aluminum

Bumper Ring for Nozzle

Part No: 801231
Material: Buna

Goodyear DEF Hose for Nozzle

Part No: 801264
Material: EPDM
Size: 3/4" swivel x 3/4" straight
Lengths: 15 ft
* Other lengths available upon request

EMCO WHEATON

A Gardner Denver Product

2480 Bristol Circle, Oakville, Ontario CANADA L6H 5S1
Tel: 905.829.8619 Fax: 905.829.8620
E-mail: webassist@emcowheaton.com
www.emcowheaton.com
ISO 9001: 2008 Certified

EMCO WHEATON

A Gardner Denver Product

POSI/LOCK BLUE - UREA DISPENSING SYSTEM



*Better by
Design*

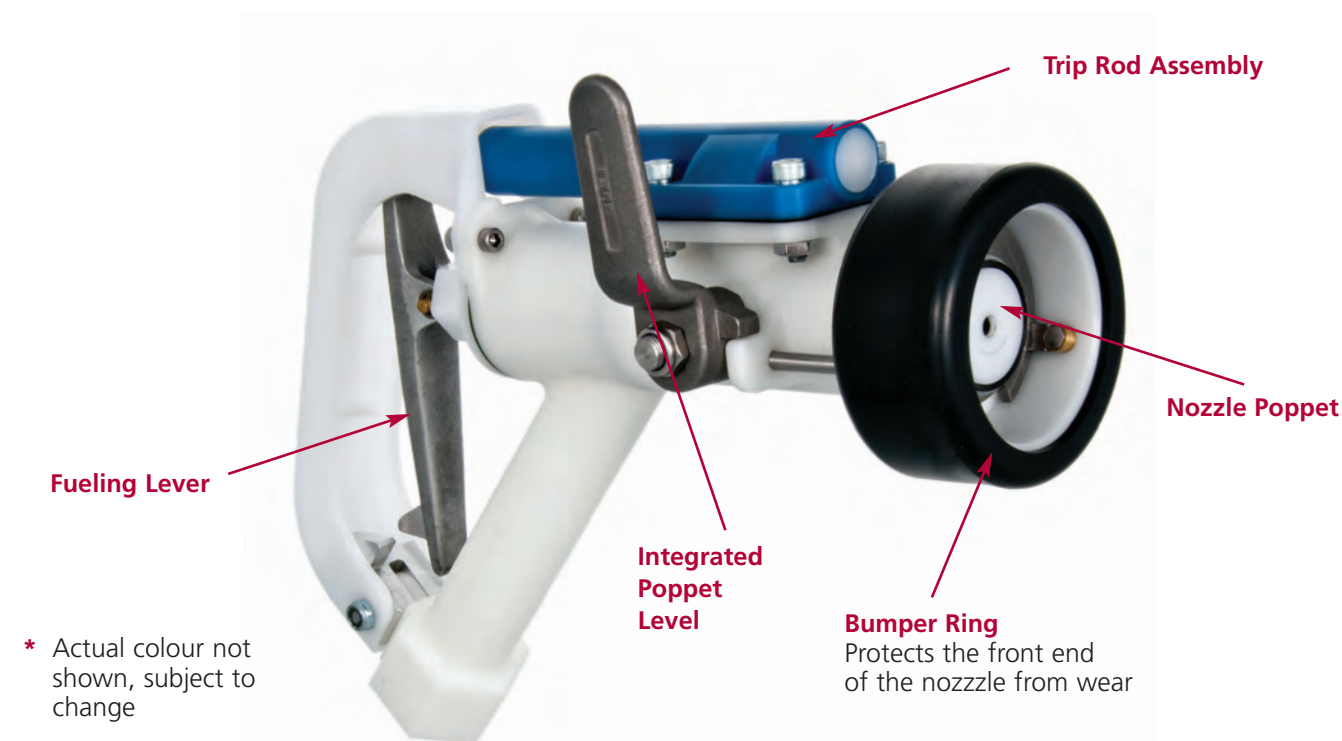
POSI/LOCK BLUE – UREA DISPENSING SYSTEM

With the introduction of DEF/Urea and the increased number of diesel and diesel/hybrid buses with SCR technology entering the market, Emco Wheaton is proud to introduce the new Posi/Lock Blue, Urea Dispensing System.

The Posi/Lock Blue system is based on the successful Posi/Lock 105 Diesel Fleet Fueling system, which is widely recognized by bus transit properties around the world, and offers the same no spill, auto shut off features.

It also has a unique interface which eliminates the risk of cross contamination which could potentially cause severe damage to the equipment; resulting in expensive repairs as well as costly traffic interruptions.

POSI/LOCK BLUE – Nozzle

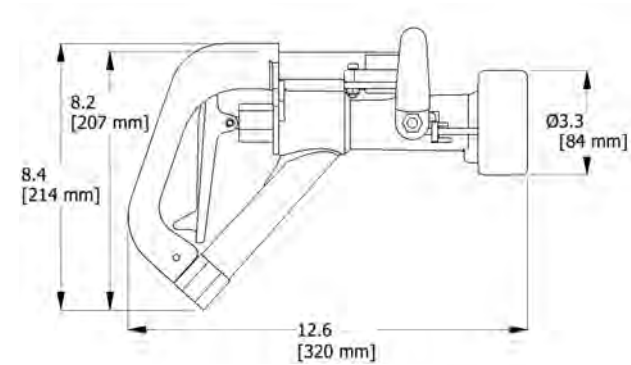


* Actual colour not shown, subject to change

TECHNICAL DATA:

Model No: G4266-201
 Inlet Size: 3/4" NPT
 Seals: Viton
 Material: Thermoplastic Polymer
 Lever: Aluminum
 Bumper Ring: Buna
 Weight: 3 lbs.

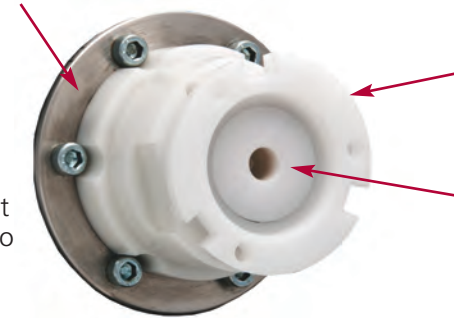
OUTLINE DIMENSIONS



POSI/LOCK BLUE – Adapter

Customizable Flange

* Actual colour not shown, subject to change



Adapter

Emco Wheaton Dry-Break technology to prevent spillage.

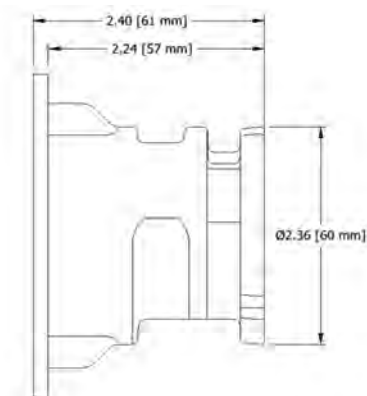
Poppet

Design prevents accidental discharge.

TECHNICAL DATA:

6 Bolt Flange
 Model No: G4256-101
 2 Bolt Flange
 Model No: G4256-102
 3 Bolt Flange
 Model No: G4256-103
 Flange: 316 Stainless Steel
 Seals: Viton
 Material: Thermoplastic Polymer
 Weight: 0.85 lbs.

OUTLINE DIMENSIONS



All Adapters are complete with flange, gasket and mounting hardware.

Benefits and Potential Cost Savings:

Operation Savings and Benefits:

- Quick retrofit of existing buses - No cutting or dropping tanks required.
- Vacuum shut off feature - Plastic tank is not exposed to any positive pressure.
- Dry-Break feature - No spill which provides a clean and safe environment
- Flow Rate - Capable of flow rates of up to 10 GPM (38L/min)
- ISO 22241 compliant – Material of all wetted components complies with ISO requirements.

Potential Cost Savings:

- Auto Shut off - No risk of overfilling
- Pre set fill level - Guarantees consistent filling
- No new training necessary - Uses same reliable operating procedures as Posi/Lock 105 diesel refueling systems
- Selective System – The interface of the Emco Wheaton DEF/Urea system is unique and will not interchange with any other system, eliminating the risk of cross contamination.