

AIR CONTROLS

803010203

EMERGENCY SHUT DOWN BUTTON

EMCO WHEATON

A Gardner Denver Product

FEATURES & BENEFITS

The Emergency Shut Down Button is designed for use with the Emco Wheaton Air Control Panel's. It provides a fast and safe system for shutting down the Emergency Valves and Vents in the event of an emergency.

- **Color-coded** red button for high visibility
- **Small size** allows for strategic mounting anywhere on the vehicle
- **Suitable for mounting multiple buttons** to vehicle in different locations allows for easy access in the event of an emergency
- **Rated** for -40°F climate
- **Replaceable parts** are not needed after button is used and the system can be restarted immediately
- **Aluminum body** drilled with mounting bolt holes or unit can be mounted using panel nut provided
- **1/4" NPT** ports for simple connection

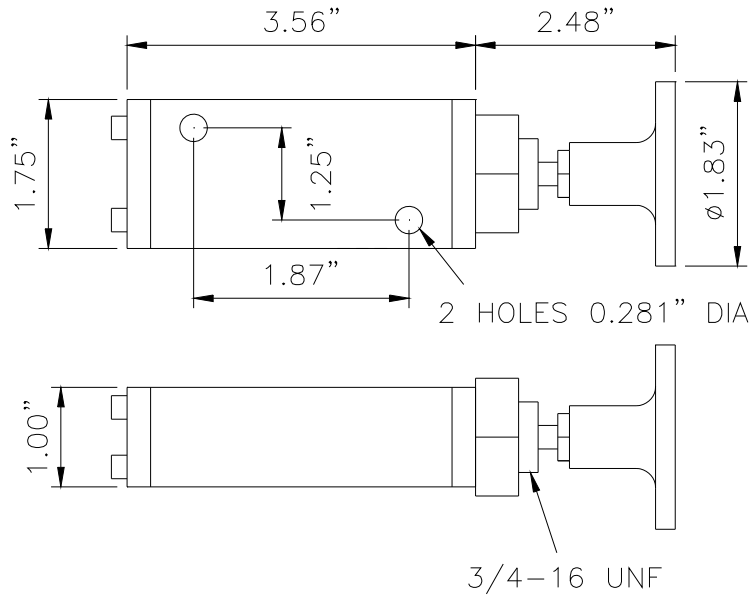


As a part of a continuous commitment to product development the company reserves the right to alter the specification of its products without prior notice

Emco Wheaton Fuel Systems
Gardner Denver Inc.
306 Middletown Park Place, Suite D, Louisville, KY 40243 USA
Tel: +1 800 285 EMCO (3626) Fax: +1 502 489 3882
e-mail: assist@emcowheaton.com www.emcowheaton.com



OVERALL DIMENSIONS



VARIANTS

PART NO.	DESCRIPTION	WEIGHT
803010203	Emergency Shut Down Button	1.0 lbs

Sheet Ref. CS803010203
Jan 2009 - Revision 0

As a part of a continuous commitment to product development the company reserves the right to alter the specification of its products without prior notice

Better by Design

EMCO WHEATON

A Gardner Denver Product

Emco Wheaton Fuel Systems
Gardner Denver Inc.
306 Middletown Park Place, Suite D, Louisville, KY 40243 USA
Tel: +1 800 285 EMCO (3626) Fax: +1 502 489 3882
e-mail: assist@emcowheaton.com www.emcowheaton.com