

**EMCO WHEATON**

*A Gardner Denver Product*

# Manifold Systems



*Better by  
Design*

## Manifold System

The Emco Wheaton Air Operated Manifold is designed for use on bobtail tank trucks and gasoline trailers, where the manifold of pipe-work to products pumps or a bulk discharge point is required.

The Manifold Assembly consists of Air Operated Manifold Valves and a lightweight Manifold Tube, which is manufactured from extruded aluminum tube thus eliminating flange connections



### Benefits

- Improves driver productivity & safety
- Eliminates the use of drybreak connectors and heavy jumper hoses
- Bottom load straight through manifold
- Reduces crossover errors
- Lower weight and envelope size compared to other piping systems
- Reliable in cold weather applications
- Product Return facility for 100% product retention

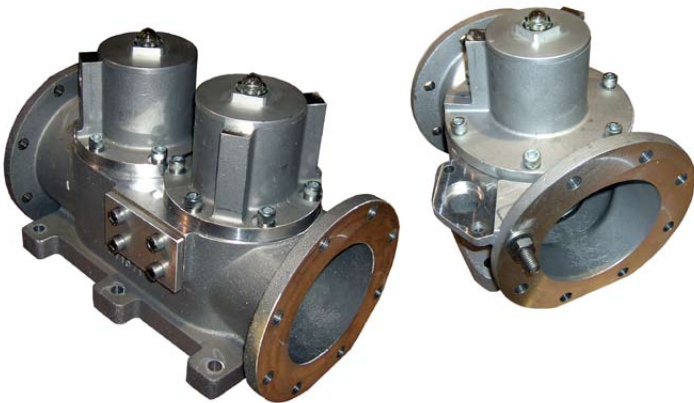
### Manifold Valve

The air operated manifold valve is built using a double-acting air cylinder assembly that ensures positive opening and closing of the manifold valve each time. The air cylinder is also equipped with a position indicator to show the driver if the valve is open or closed.

### Product Return

The "Product Return System" can be added for the safe and clean return of product to the original compartment.

This feature offers fast changeover to other products, whilst retaining 100% of the returned product.

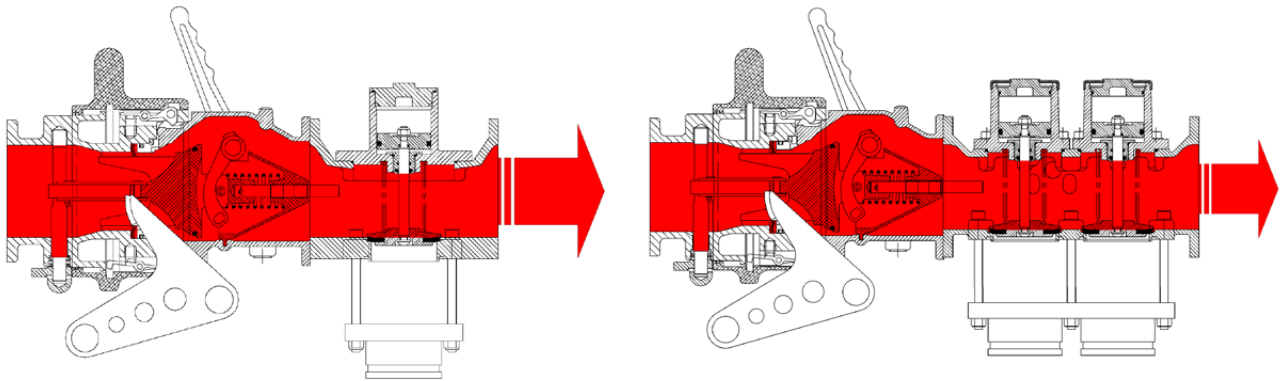


Double Manifold Valve

Single Manifold Valve

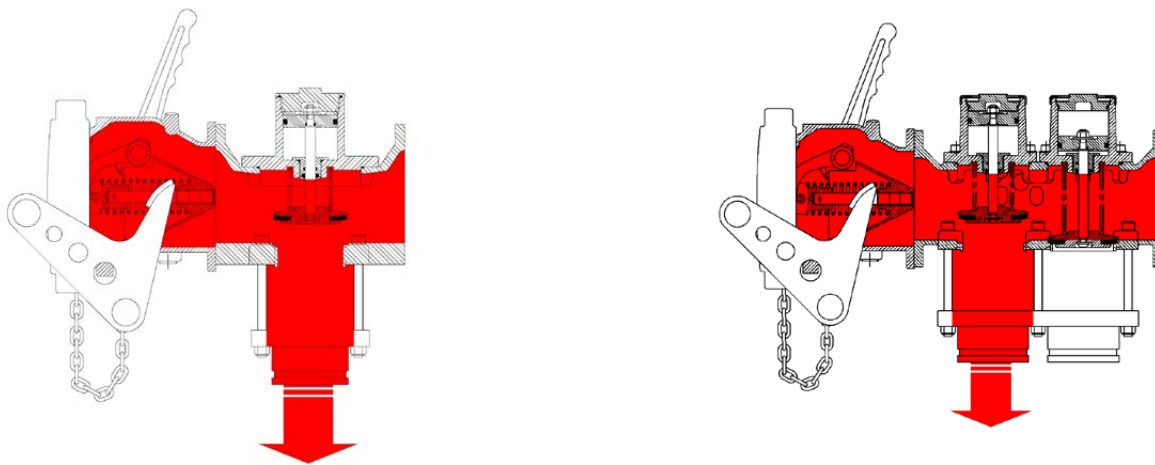


Product Return Spout



## Bottom Loading

The Manifold Assembly offers the ability for the tank to be “Bottom Loaded”, which increases productivity over “Top Loading”. High flow rates, low weight and smaller envelope size are achieved with this design.

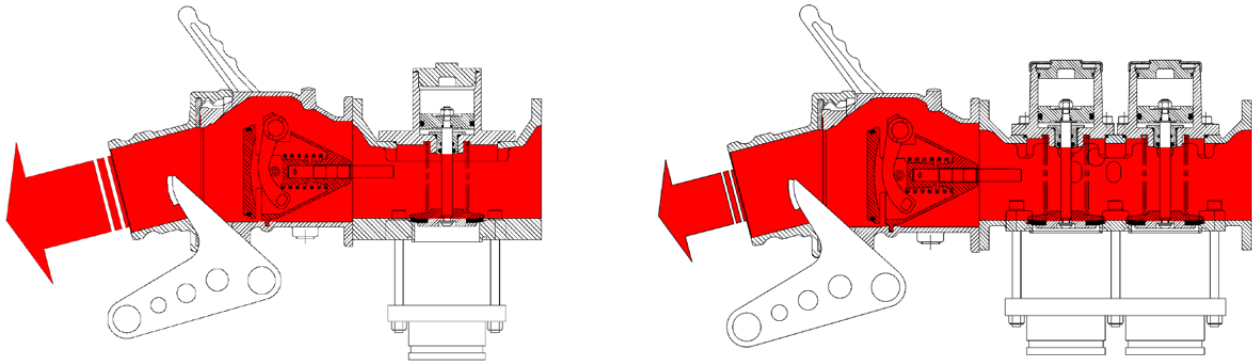


## Manifold Unloading

Manifold unloading is performed by opening the desired manifold valve/s, so product can flow into the Manifold Tube and then into a product pump or bulk discharge point.

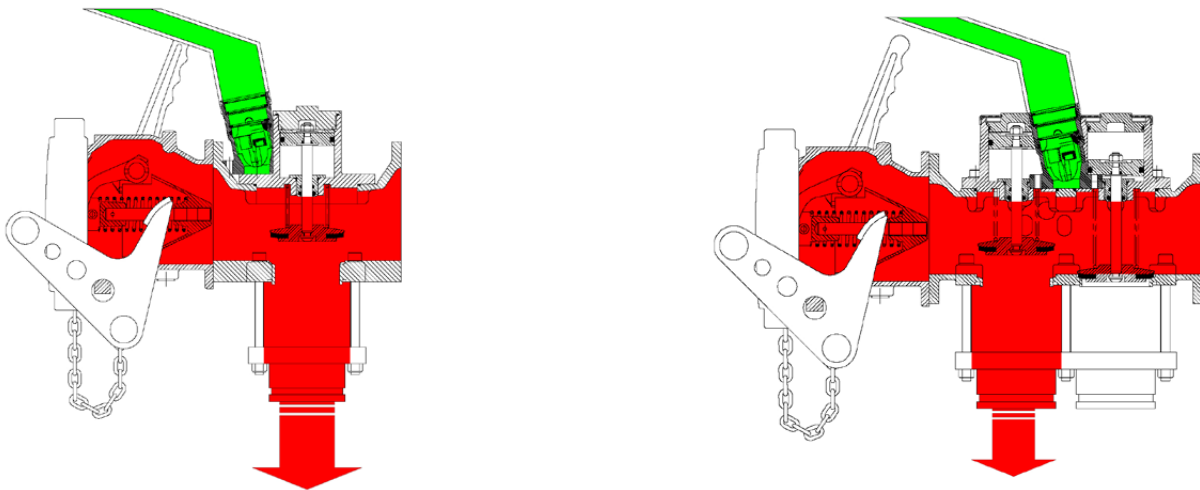
## Weight saving design

Typical Unit Weight (14" Centers)	Single	Double
2 COMPT	29 LBS	54 LBS
3 COMPT	50 LBS	81 LBS
4 COMPT	73 LBS	94 LBS
5 COMPT	94 LBS	107 LBS



## Bulk Discharge

Bulk Discharge is performed using an Openable API Adapter and delivery accessories. High flow rates upon discharge improve daily efficiency and maximizes equipment versatility



## Product Return

Product Return is now easier, safer and more profitable, by using the Product Return System. This keeps the driver on the ground, eliminates the need for flush tanks and retains 100% of the product for delivery.

## Manifold Assembly

The Manifold Assembly is made up of Manifold Valves mounted to a one piece extruded Manifold Tube, which has been precision machined to the desired dimensions.

The Manifold Valves are fixed to the Manifold Tube using a unique clamp bar system that ensures an even leak tight seal. Each Manifold Tube is fitted with a 3" grooved nipple, which is accurately welded into place. Each unit is then pressure tested for leaks.



Single Manifold  
Assembly



Double Manifold  
Assembly

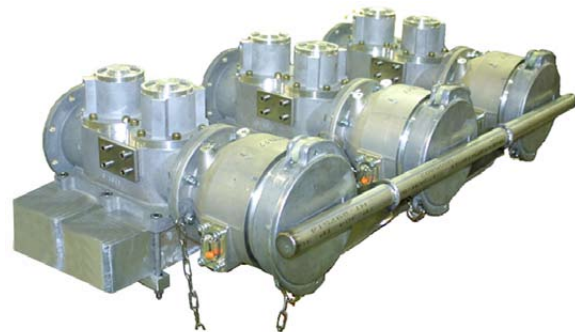
## Bottom Loading

API Adapters, Dust Caps, Product Return System and a Guard Bar Assembly can be included with the Manifold Assembly to allow bottom loading and bulk discharge feature.

Complete assemblies are pressure tested to reduce installation time and cost at the tank builder.



Single Manifold Assembly with  
API Adapters, Guard Bar and  
Products Return System



Double Manifold Assembly with API Adapters,  
Guard Bar

**EMCO WHEATON UK Limited**

Channel Road · Westwood Industrial Estate  
Margate, Kent CT9 4JR · UK  
Phone +44 1843 221521 · Fax +44 1843 295444

**EMCO WHEATON GmbH**

Emcostraße 2-4 · 35274 Kirchhain · Germany  
Phone +49 6422 84-0 · Fax +49 6422 5100

**EMCO WHEATON USA, INC.**

9111 Jackrabbit Road · Houston, Texas 77095 · USA  
Phone +1 281 856-1300 · Fax +1 281 856-1325

**EMCO WHEATON Corp.**

2480 Bristol Circle · Oakville, Ontario L6H 5S1 · Canada  
Phone +1 905 8298619 · Fax +1 905 8298620

**GARDNER DENVER Inc.**

306 Middletown Park Place, Suite D  
Louisville, KY 40243 USA  
Toll Free: 1-800-285-EMCO (3626)  
Phone: +1-502-489-3884 · Fax: +1-502-489-3882

**TODO AB**

Box 33, Industrigatan 2-4 ·  
S-545 21 Töreboda · Sweden  
Phone +46 506 19940 · Fax : +46 506 19944

**GARDNER DENVER FRANCE SA**

Immeuble Le Miroir, 15-17, Boulevard du G<sup>al</sup>. de Gaulle  
92120 Montrouge · France  
Phone +33 146 1241-41 · Fax +33 146 1241-59

**EMCO WHEATON ASIA PACIFIC**

21 - 5F · IOI Business Park · Bandar Puchong Jaya  
47100 Puchong Selangor · Malaysia  
Phone +603 8075-7500/7900 · Fax +603 8075-4100

**GARDNER DENVER INTERNATIONAL LTD.**

PO Box 30804 · Diraz, Manama · Bahrain  
Phone +973 17813187 · Fax +973 17813186

**EMCO WHEATON GmbH**

Branch Office CEE  
Blue Danube Park, Objekt 60 · 2100 Korneuburg Austria  
Phone +43 2262 64281-0 · Fax +43 2262 6428120

**EMCO WHEATON Regional Sales Office**

PO Box 468 · Cross Lane, Tong, Bradford ·  
West Yorkshire BD4 0SU · UK  
Phone +44 1274 683131 · Fax +44 1274 651006

[www.emcowheaton.com](http://www.emcowheaton.com)  
[www.todo.se](http://www.todo.se)

[assist@emcowheaton.com](mailto:assist@emcowheaton.com)  
[assist@todo.se](mailto:assist@todo.se)