



Emco Wheaton supplies individual control systems for comfortable and safe operation of loading arms.

Depending on the application design of the control systems can be mechanic, pneumatic or hydraulic

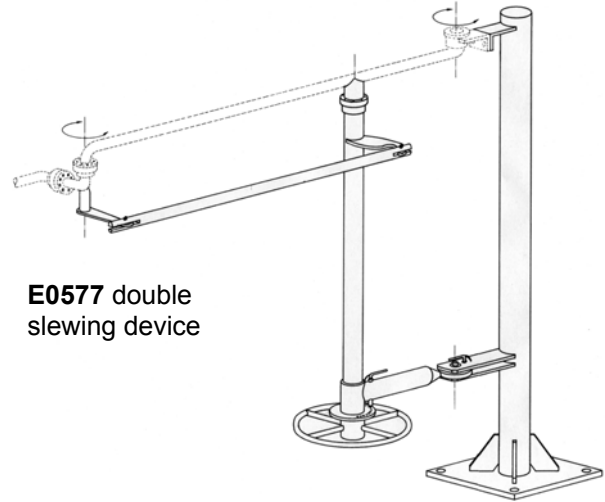
- ◆ highest reliability by use of quality approved components
- ◆ individual design
- ◆ completely assembled, proved and checked prior delivery
- ◆ user friendly operation

kind of movement system	hold down	vertical movement	horizontal movement	balancing
double slewing device			X	
hold down device E0397	X			
pneumatic actuator E0651	X	X		
pneumatic balance E0902	X	X		X
all movements pneumatically operated	X	X	X	if applicable
all movements hydraulically operated	if applicable	X	X	if applicable
electrical control		X	X	

The **double slewing device** controls the horizontal slew, and the arresting in parkposition of the loading arm from the bottom.

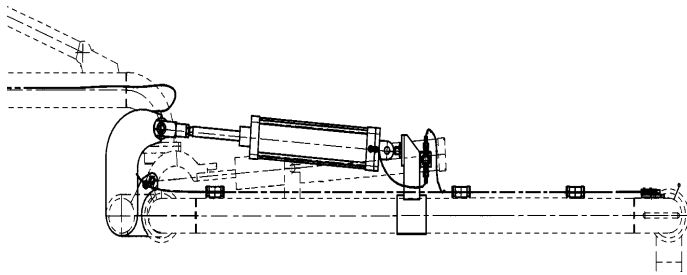
The "F"-tube is slewed by moving the whole device and the "A"-tube is slewed by operating the handwheel via the connecting rod.

The device is used on installations where there is no loading gantry. The height of the standpost is arbitrary.



E0577 double slewing device

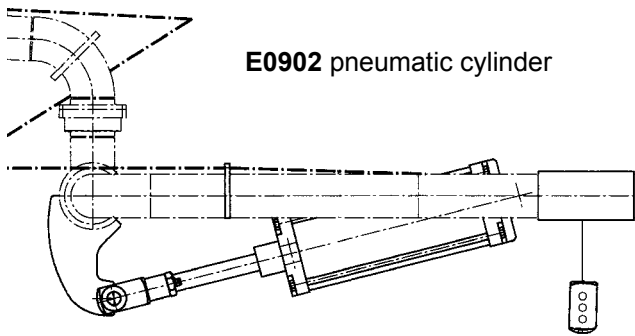
E0397 hold down device
E0651 pneumatic actuator



E0397 hold down device

The loading arm is balanced through spring cylinder or counterweight. The cone or the adapter plate will be pressed to the manhole by use of a separate pneumatic cylinder.

The **E0651 pneumatic actuator** is used for the up and down movement as well as pressing the loading arm on the top of the manhole. The balancing is carried out by spring cylinder or counterweight. Operated by handlever pendant push button (2 or 3 buttons).



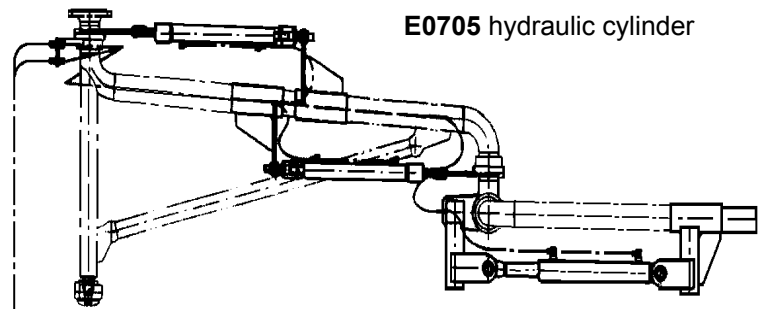
E0902 pneumatic cylinder

The **E0902 pneumatic cylinder** is used for the up and down movement and pressing the loading arm on the top of the manhole. Operated by handlever pendant push button (3 buttons).

The **hydraulic system** enables remote loading arm control. It will be used for arms which are unable to be operated manually – either by its weight or site conditions.



electrical control



E0705 hydraulic cylinder

The **electrical control** will be used for special hygienic requirements or where a high control precision has to be achieved. The balancing is carried out by spring cylinder or counterweights. Special designs are possible, e.g. full automatic control systems.

EMCO WHEATON
A Gardner Denver Company

Control_Systems_e - WSP/hsc

Whilst the content of this leaflet has been edited with the greatest care, we are not liable for any errors or omissions

EMCO WHEATON
GmbH

Emcostr. 2 – 4 D - 35274 Kirchhain, Germany
Tel.: +49 (0) 6422 84- 0 ♦ Fax : +49 (0) 6422 5100
sales@emcowheaton.com ♦ www.emcowheaton.de