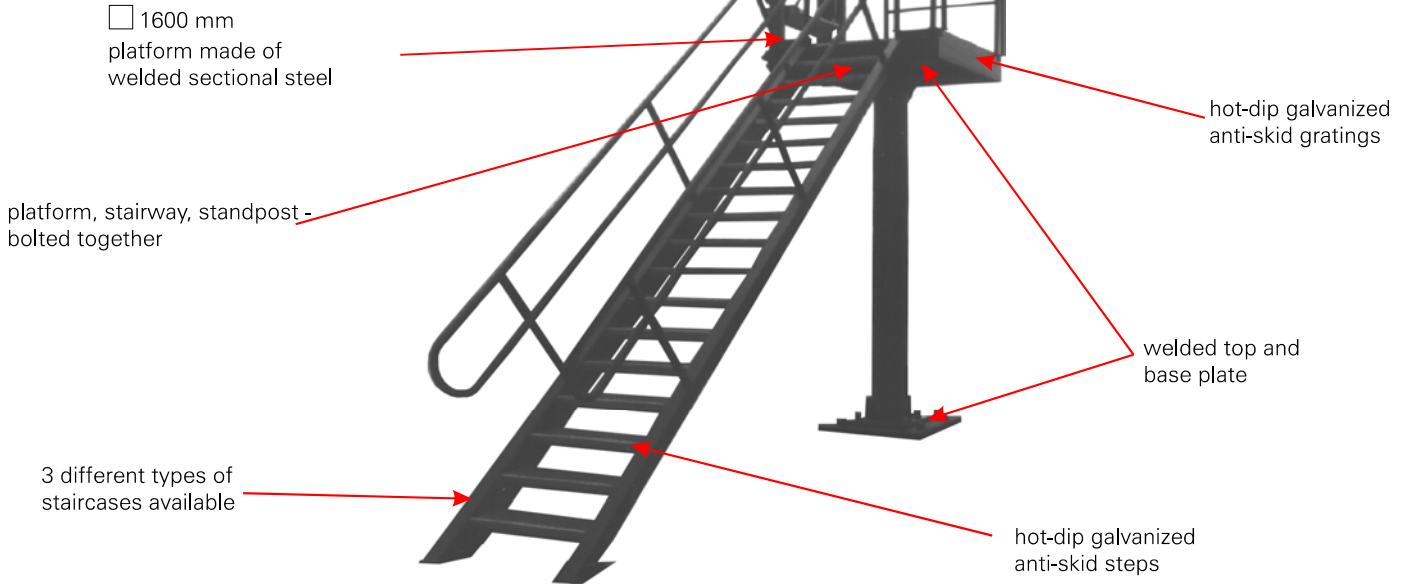


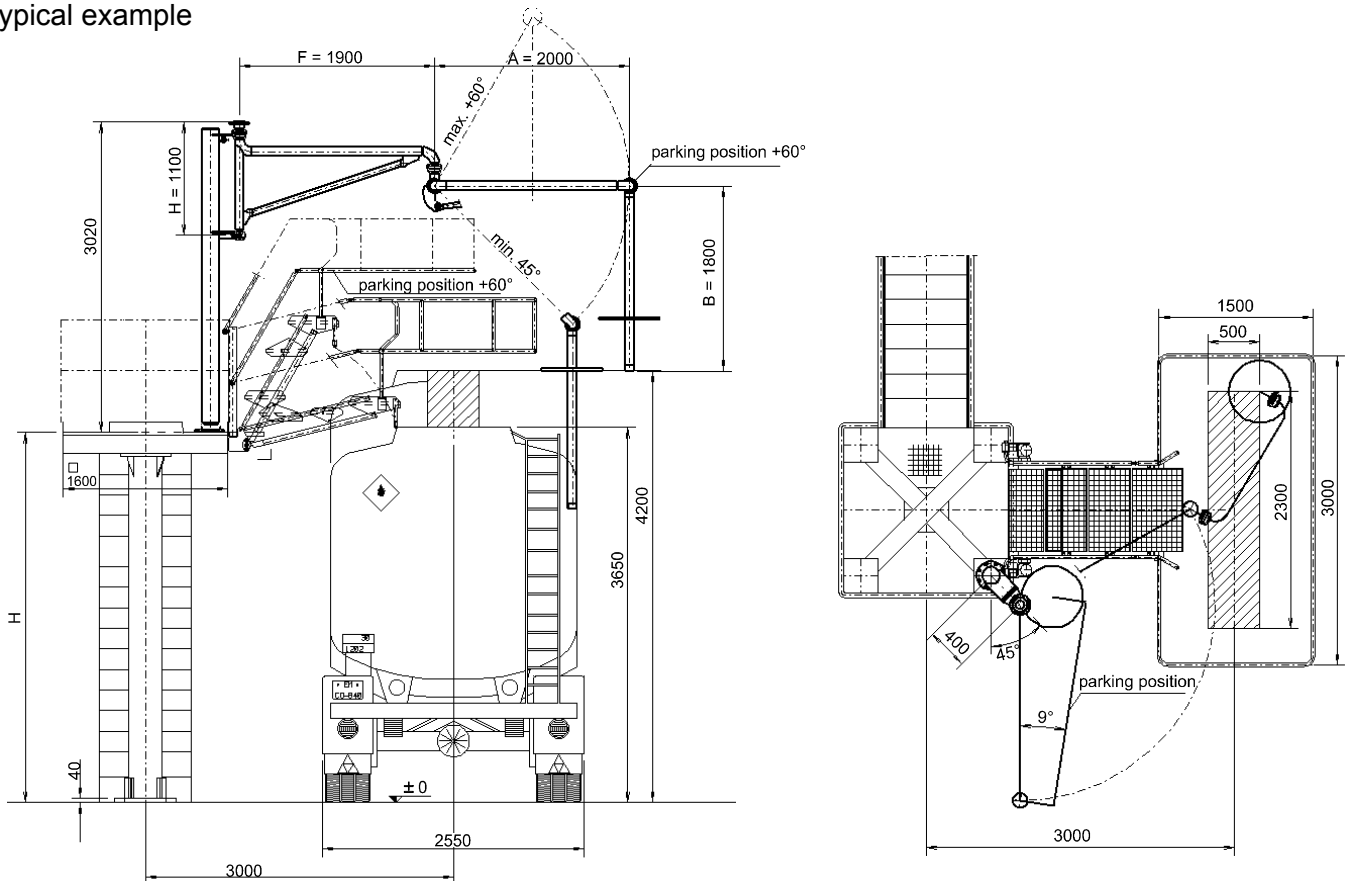


*Safety to the top*

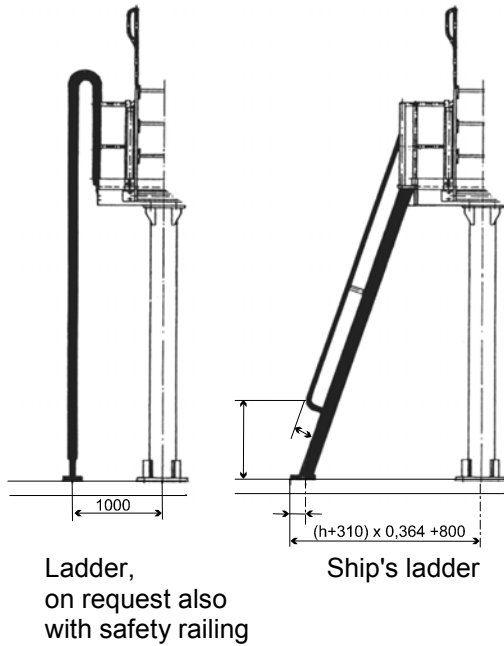


- stable design according to DIN 31003 with static approval
- Equipment with up to 2 loading arms and one folding stairway with safety basket is possible
- hot-dip galvanizing of complete loading rack is possible
- hand rail of stairway and platform can be delivered also with double safety bar

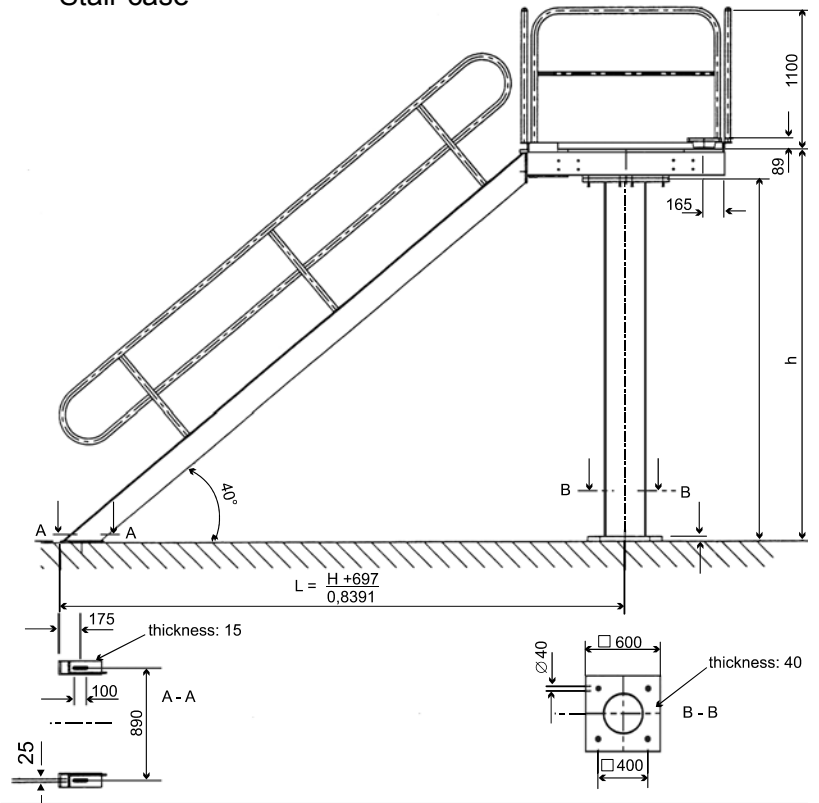
Typical example



## Technical Data

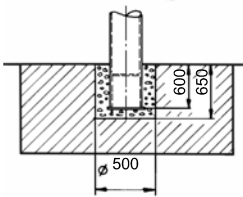


## Stair case

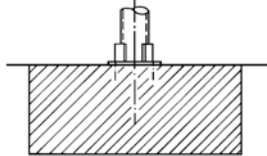


## Foundation design for the standpost

### Variant 1

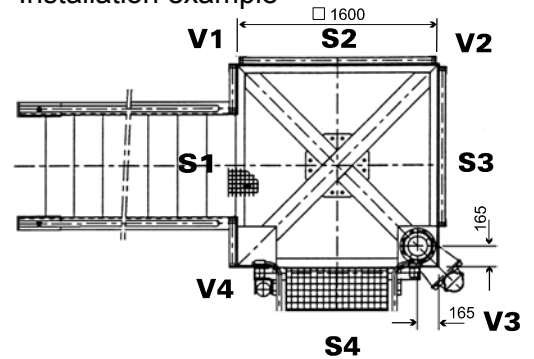


### Variant 3



Max. foundation design:  
 bending moment = 93,9 KNm  
 vertical force = 78,6 KN  
 horizontal force = 4,1 KN

## Installation example



## The following parameters have to be defined by the customer:

1. The staircase has to be positioned always at S1
2. Position of folding stairway at S2 or S3 or S4
3. Position of loading arm at V1 or V2 or V3 or V4
4. Height of loading rack "h"  
 For a platform height "h" of more than 3040 an intermediate platform is required in accordance with DIN 31003  
 ⚠ **Please note:** Due to structural reasons dimension "h" always must be divisible by 190!
5. Foundation design: variant 1 or 3

**EMCO WHEATON**  
 A Gardner Denver Company

E0300\_e / hsc

Whilst the content of this leaflet has been edited with the greatest care, we are not liable for any errors or omissions

**EMCO WHEATON**  
 GmbH

Emcostr. 2 – 4 D - 35274 Kirchhain, Germany  
 Tel.: +49 (0) 6422 84-0 ⚡ Fax: +49 (0) 6422 5100  
 sales@emcowheaton.com ⚡ www.emcowheaton.de