

Swivel Joint for heavy duty

The **D1010** is the standard swivel joint with two ball tracks.

It is especially used where large size swivel joints have to take heavy loads (typical example: EMCO Marine Loading Arms).

Both ball tracks of the **carbon steel** version are hardened and polished. This gives the swivel joint a high degree of load capacity and long service life, even under extreme loads.

The internal flange makes it possible to change the seal without removing the swivel joint from the pipeline.

The sealing surfaces are plated with stainless steel and precision-finished to prevent corrosion. This ensures that the seal that slides along these sealing surfaces is not damaged and will seal perfectly.



The **D1010 swivel joint**, made of a **special aluminium alloy**, is not supplied with hardened ball tracks due to material characteristics, therefore it is only suitable for normal loads. Aluminium swivel joints have no specially platee seal faces due to the chosen alloy.

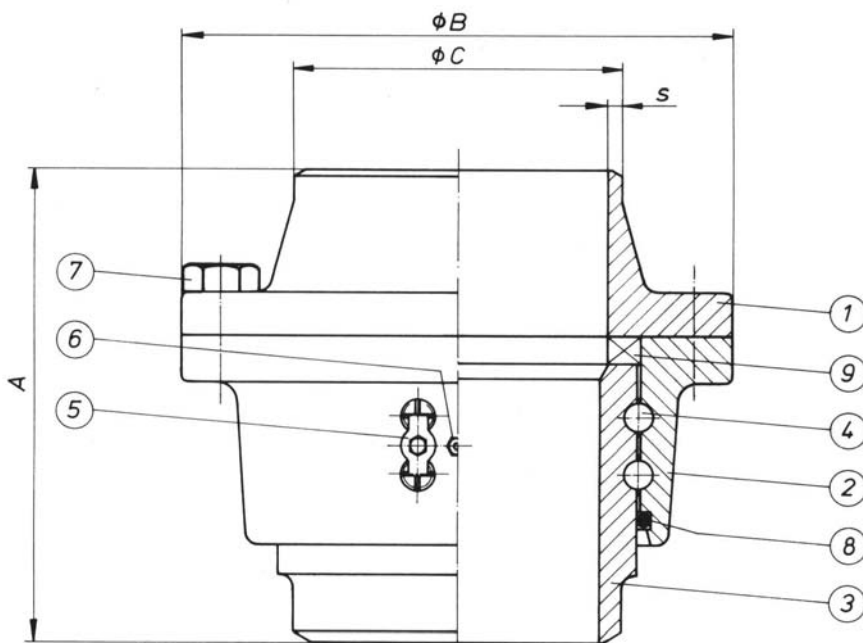
The D1010 swivel joint can be relubricated via grease nipples. If required, the balls can be removed and replaced by first removing the ball track plugs.

Size * DN	Material	Seal material	Allowable internal pressure (gauge pressure)		Allowable temperature range **
			operational	test pressure	
150, 200, 250, 300, 400, 500, 600	carbon steel	<ul style="list-style-type: none"> • Buna N • Viton • PTFE 	25 bar	37,5 bar	-10 °C to +200 °C
150, 200, 250, 300, 400, 500, 600	low temperature steel	PTFE	25 bar	37,5 bar	-50 °C to +200 °C
150, 200, 250, 300	aluminium alloy	<ul style="list-style-type: none"> • Perbunan • Viton • PTFE 	10 bar	15 bar	-10 °C to +120 °C

* larger sizes are available

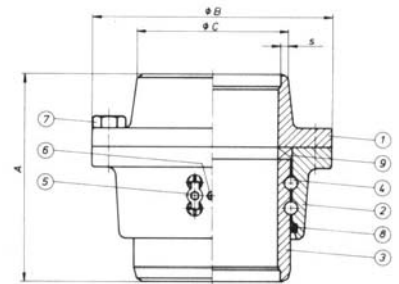
** temperature range might be restricted due to seal material

SWIVEL JOINT D1010



D1010 carbon steel

Normal attitude horizontal or vertical. If O-ring part No. 8 is facing upwards, make certain that water cannot enter into O-ring groove (protective cover)



D1010 aluminium

- | | | |
|-----------|-----------------------|----------------------|
| 1. flange | 4. balls | 7. flange screws |
| 2. body | 5. ball track locking | 8. dust O-Ring |
| 3. sleeve | 6. grease nipple | 9. swivel joint seal |

DIMENSIONS AND WEIGHTS (metric)

Size	Material	A	B	C	S	Bolts	Weight (kg)
DN 150	carbon steel and low temperature steel	245	279,4	168,3	11,0	8 x M 20	34
DN 200		275	342,9	219,1	12,7	8 x M 20	55
DN 250		265	406,5	273,0	12,7	12 x M 24	75
DN 300		296	482,6	323,8	12,7	12 x M 24	127
DN 400		305	596,9	406,4	12,7	16 x M 27	175
DN 500		326	698,5	508,0	12,7	20 x M 30	238
DN 150	aluminium	245	279,4	159,0	8,7	8 x M 20	14
DN 200		275	342,9	210,0	10,0	8 x M 20	20
DN 250		240	406,4	273,0	9,3	12 x M 24	29
DN 300		255	482,6	324,0	9,3	12 x M 24	38

Dimensions and weights for larger swivel joints are available on request

EMCO WHEATON
A Gardner Denver Company

D1010_e / hsc

Whilst the content of this leaflet has been edited with the greatest care, we are not liable for any errors or omissions

EMCO WHEATON
GmbH

Emcostr. 2 – 4 D - 35274 Kirchhain, Germany
Tel.: +49 (0) 6422 84-0 ♦ Fax : +49 (0) 6422 5100
sales@emcowheaton.com ♦ www.emcowheaton.de